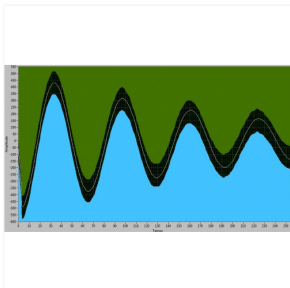


MHT

DIELECTRIC & SURGE TESTER / SHOCKWAVE



DESCRIPTION



FEATURES

OTHER FEATURES

- Dielectric rigidity control - insulation test: from 500 to 3000VAC / 50Hz
- test duration : 1 to 99 seconds
- current max. : 10mA
- Surge test or Shock wave : from 200 to 1500V
- Charge duration : 1 μ s
- Load capacitor : 0.1 μ F
- Sample Freq. : >1MHz
- RS422 link : transmission speed 19200Bauds
7 data bits, 1 stop bit, parity even

POWER SUPPLY

- 230VAC / 50Hz

ACCURACY

- < 0,5% FS

TEMPERATURE OF CALIBRATION

- 20 to 25°C

CASING

- Aluminium case 19" rackable 3U

PRICE On quote only

WEB LINK [Click here](#)

SECTOR COIL WINDING

USAGE

WEIGHT 14 Kg

LENGTH 480 mm

WIDTH 380 mm

HEIGHT 133 mm

CUSTOMS CODE 9030390091

C. OF ORIGIN France

GUARANTEE 1 year

CERTIFICATION CE

CONTACT commercial@serem-electronics.com